

# Siren

## Two-way siren MS-290

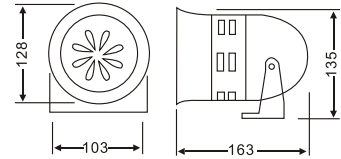


METAL



PLASTIC

OUTER SIZE

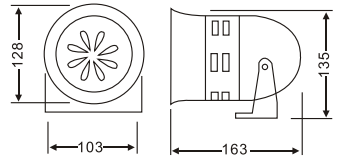


Technology Parameter			
Model	Voice-grade	Case	Operation Voltage
MS-290	110dB The radius in 1m	Plastic Metal	DC12V、DC24V; AC110V、AC220V

## High power siren MS-390



OUTER SIZE

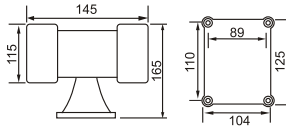


Technology Parameter			
Model	Voice-grade	Case	Operation Voltage
MS-390	115dB The radius in 1m	Metal	DC12V、DC24V; AC110V、AC220V

## High power siren MS-490



OUTER SIZE

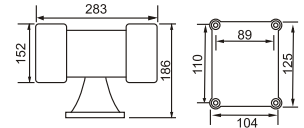


Technology Parameter			
Model	Voice-grade	Case	Operation Voltage
MS-490	120dB The radius in 1m	Metal	DC12V、DC24V; AC110V、AC220V

## High power siren MS-590



OUTER SIZE



Technology Parameter			
Model	Voice-grade	Case	Operation Voltage
MS-590	125dB The radius in 1m	Metal	DC12V、DC24V; AC110V、AC220V

## Two-way siren MS-690



Technology Parameter			
Model	Voice-grade	Case	Operation Voltage
MS-690	130dB The radius in 5m	Metal	AC380V

## Two-way siren MS-790



Technology Parameter			
Model	Voice-grade	Case	Operation Voltage
MS-790	125dB The radius in 5m	Metal	AC380V